

# Paris and the 15-minute City concept

Maurice Barth

Member of the AITF Board, International Relations and Europe.

**AITF**

French Association of Public Territorial Engineers

IFME member





# AITF Maurice Barth

- Architect and Engineer,
- Urban Planner, Geography and spatial planning Researcher,
- Expert in International Codevelopment and Governance
  
- *Main functions performed:*
  - Director General of Urban Technical Services, Architecture, Transportation and Technical networks
  - Director General of Real Estate of the Alsace Region
  - Senior Expert in territorial co-development of developing countries
  
- Member of the AITF Board, for International Relations and Europe
- Member of IFME : International Federation of Municipal Engineers



# Association of Territorial Engineers of France

*Our mission: proximity, technicality and efficiency for relevant territorial strategies*

- **Created in 1937, currently 3,700 members of the territorial engineers**
  - **Goal : Belonging to a unique professional network of solidarity and information**
  - **A network of exchanges and capitalisation of experience**
  - **19 thematic working groups, 14 regional sections, a Board of Directors (40 persons),**
  - **A very comprehensive legal protection and a voluntary Career Commission**
  - **Training and Communication: Partnership with the National Centre of Public Territorial Function for training programs.**
  - **National Meeting of Territorial Engineering (RNIT) - Information and training days**
  - **Working Groups** regularly sought by national authorities
  - **An International working group** for technical cooperation,
  - AITF is co-founder and active member of **IFME** (International Federation of Municipal Engineering)
  - **A publication: the "Magazine of Territorial Engineering »,**
- **A website ([www.aitf.fr](http://www.aitf.fr))**



# International inspiration and local variation

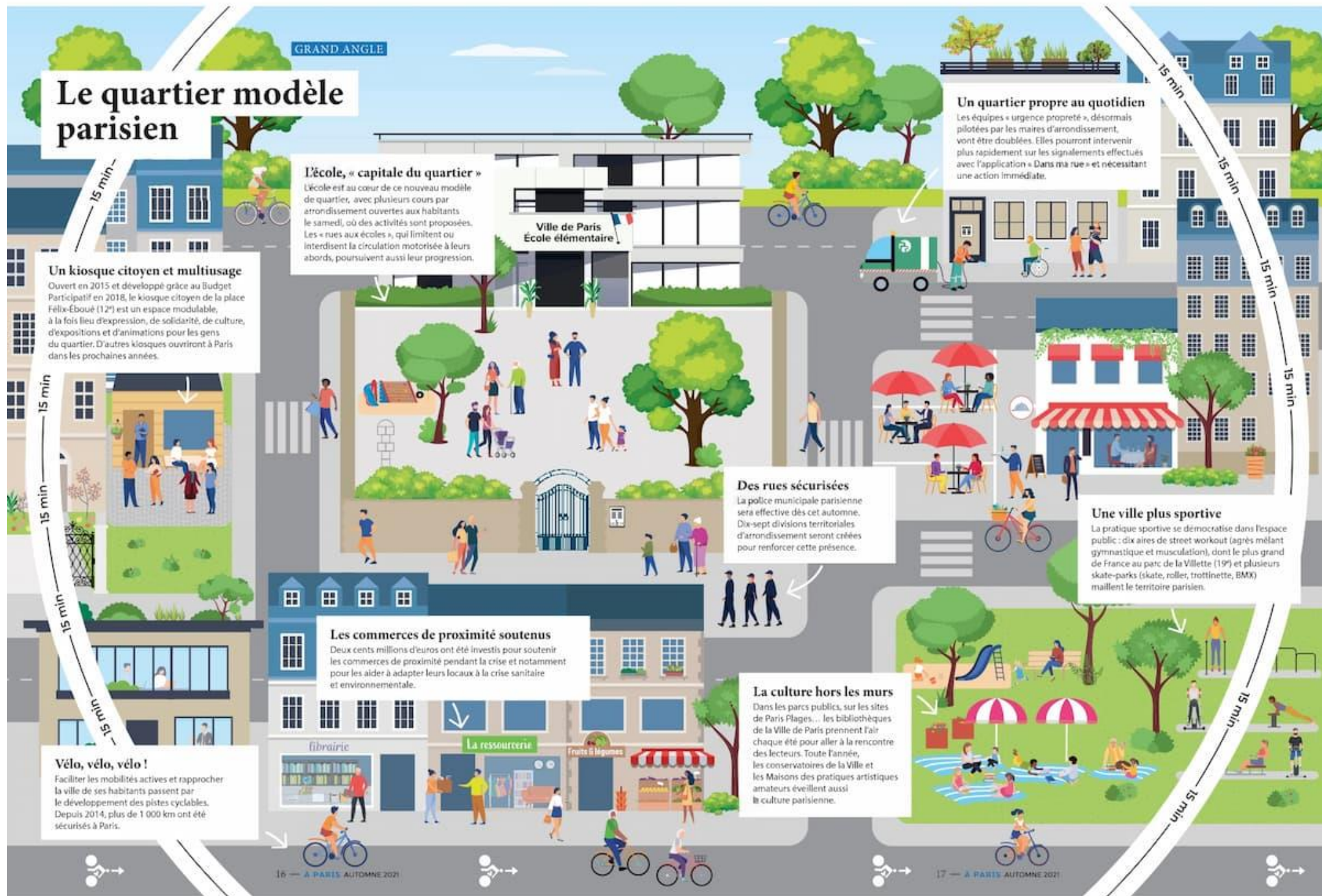
- Melbourne and Ottawa have developed "15 or 20-minute neighbourhoods", just like the major cities of the **C40, the "global network of cities for the climate"**, such as Milan, Montreal, Bogotá, Buenos Aires, etc. (96 cities)
- In Northern Europe, Copenhagen, Edinburgh and Utrecht are also inspiring cities.
- The Major of Paris, Anne Hidalgo was president of C40 (during 2016/2019).
- Yet C40 President is the Major of Los Angeles
- The **«20-minute neighbourhoods»**, initiated in Portland in the 2000s, inspired in France, Rennes and Bordeaux... and of course Paris.



The global concept of the 15 minute-city

-> to decline locally

How Paris wants to adapt locally the concept of the “15 minute-city”



# The "Calm City" concept

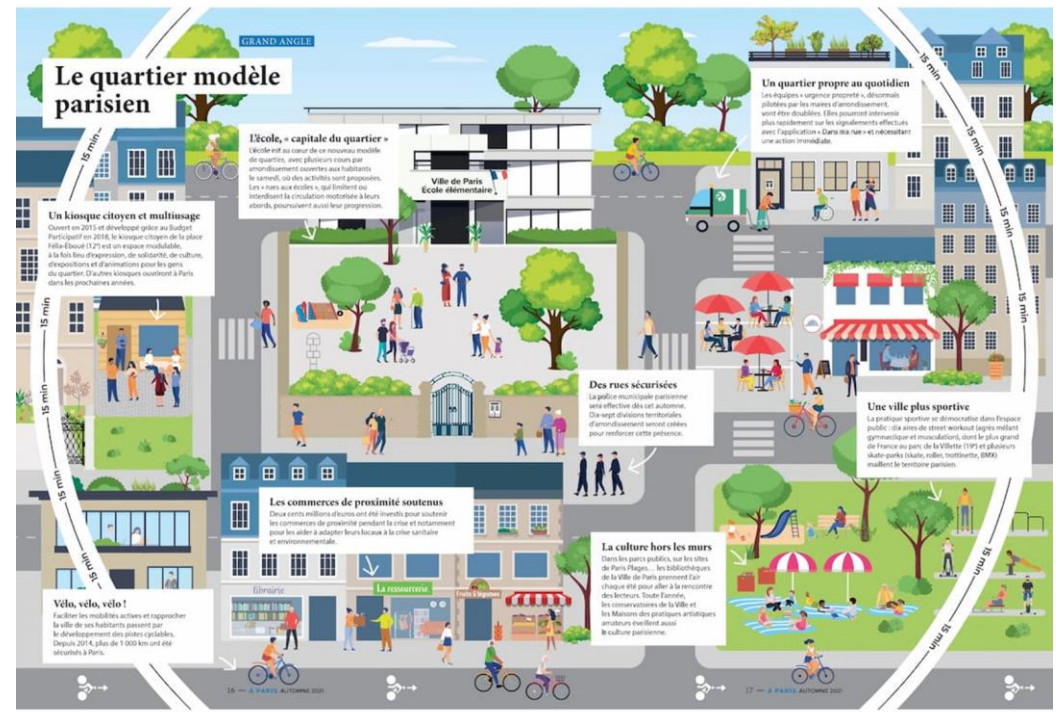
Ecological, economic and social priorities

Facing an imbalanced city, moving from spatial zoning and hyper-mobility to hyper-proximity  
Rebalancing the whole town over the long term.

Urban and technical impacts by transforming existing spaces and places

Three main key themes:

- school,
- culture
- and participatory democracy.



# First key: The school, 'Capital' of the district

- Paris wants to open up schoolyards to neighbourhoods, and also renovate and revegetate them

in order to welcome people, outside school time, for leisure activities, culture and sport.

("courtyards as oases program"  
*2018-2040*),

- Paris wants to create pedestrian areas around the schools as well.



COURS D'ÉCOLES ET DE COLLÈGES  
**OASIS**

Végétalisation et rafraîchissement

Infiltration des eaux pluviales

des aires de jeux fabriquées localement

Une cour dont on peut profiter pendant les vacances

Un lieu agréable pour se rafraîchir le soir

Un projet co-conçu par les enfants

une ombrière

un jardin pédagogique

une fontaine ludique

CO-DESIGN + CLIMAT + LIEN SOCIAL = RÉSILIENCE

LES ÉCOLES ET COLLÈGES

2018  
2019

L'école Charles-Hermitte (18e)  
L'école Ribette (20e)  
L'école Daumesnil (12e)

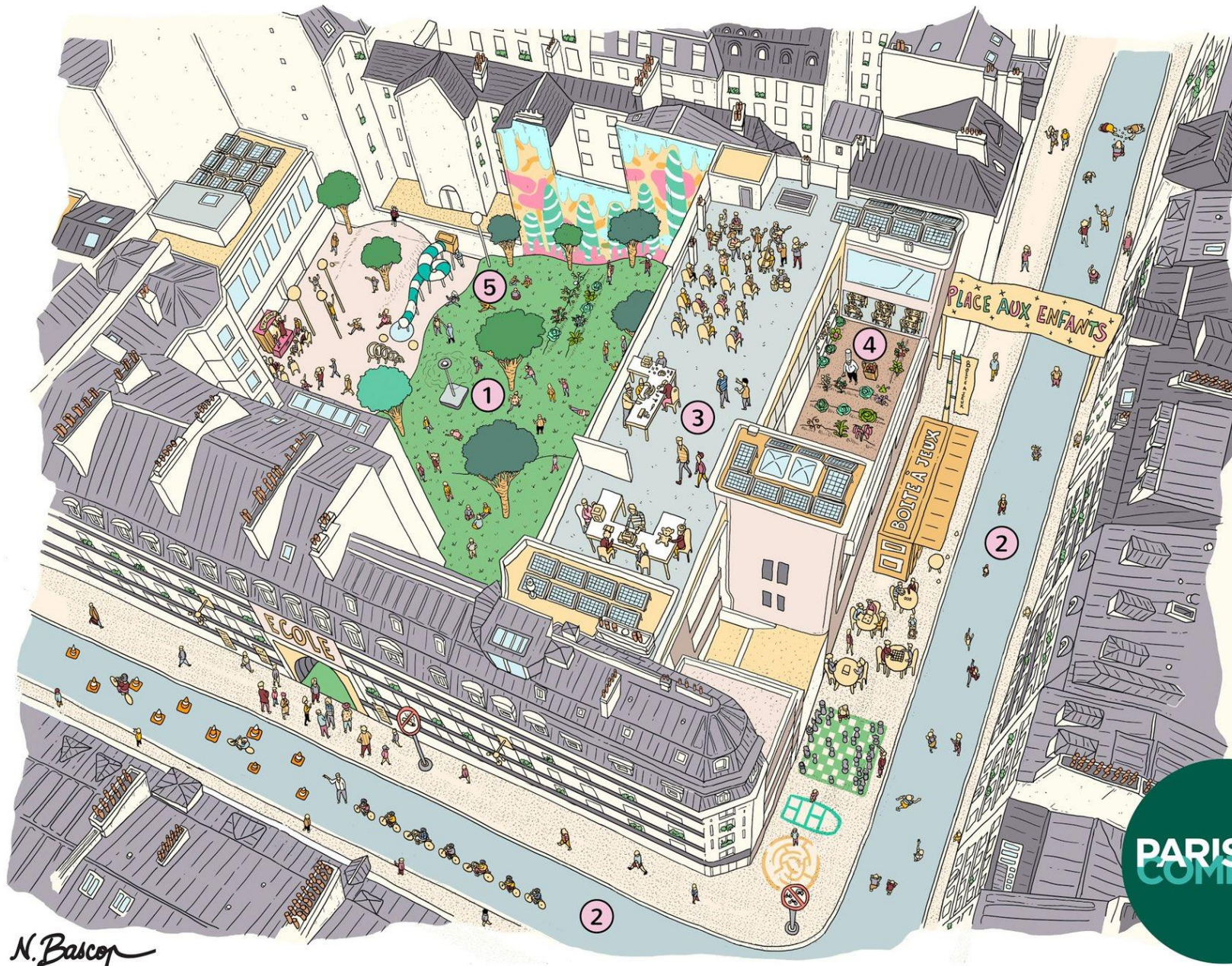
3 projets réalisés  
30 cours oasis programmés pour 2019  
100% des cours parisiennes peuvent être transformés d'ici 2040

RESILIENT PARIS

U.I.A. ESIEE UFR de l'Université Paris Diderot SciencesPo UED PIER

Claue PARIS DIDEROT UFR de l'Université Paris Diderot SciencesPo UED PIER





① Une cour de récréation transformée en jardin ouvert le week-end

② Une rue aux enfants piétonnisée au moins aux horaires de dépôt de l'enfant, et où l'on peut jouer avec la boîte à jeu

③ De nouveaux apprentissages pour les enfants autour de la culture, l'environnement, le bricolage, etc

④ Des repas bio, en circuits courts servis aux élèves dans les cantines

⑤ Une école avec une garantie environnementale : airs, sols, perturbateurs endocriniens

N. Bascop

PARISEN  
COMMON

## 2<sup>nd</sup> key :

# Bringing culture closer to the inhabitants and offer "Sport and Social Clubs"

- Local "artistic platforms" will bring culture closer to the inhabitants.
- And single place for many activities for parents and children, free of charge, close to home, like sport, childcare or homework help



# City in the city, unique sharing space

- At the same time, Paris will continue to develop sport activities on city streets and gardens.



# The 15-minute City also means adapting shops

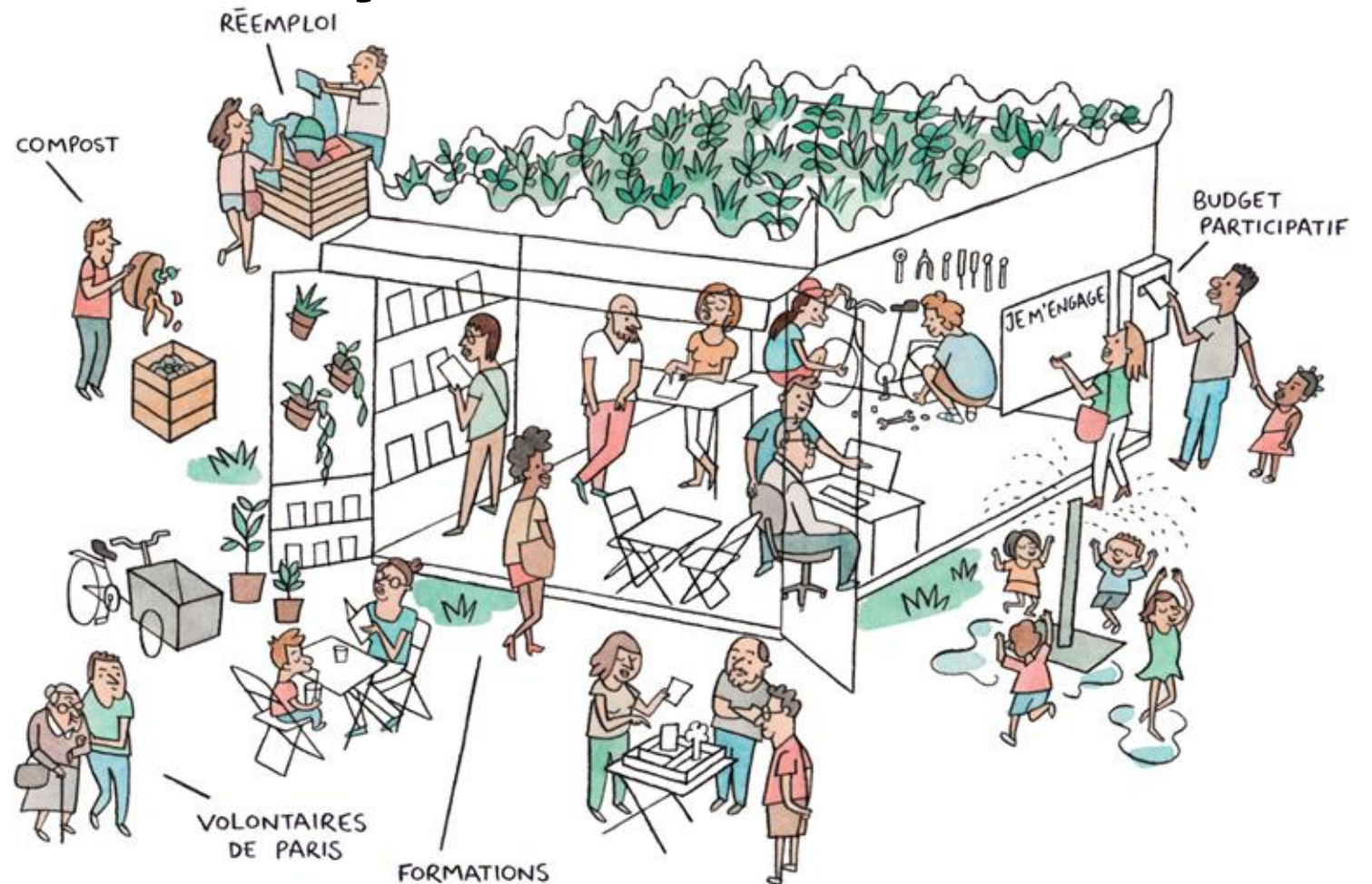
- To strengthen the local shops and services network, Paris will promote :
  - local production
  - and/or “short circuits”,
  - thanks to the "Fabriquer à Paris" label (food trade, street markets, cultural gift shops, etc.).



# 3<sup>rd</sup> Key

## Participatory democracy

- The opinion of the inhabitants of the neighbourhoods is essential.
- Developing “**Citizens' kiosks**”, i.e. local spaces where citizens can meet and help each other and speak with municipal officers or associations.
- Paris will therefore first carry out an intervention in pilot areas



# The 15-minute City in response to the health crisis

- Covid-19 crisis and public transportation and moves restrictions
- -> local solutions for basic needs and social life
- Strengthening inner-city medicine
- Response to the health and climate challenges ahead

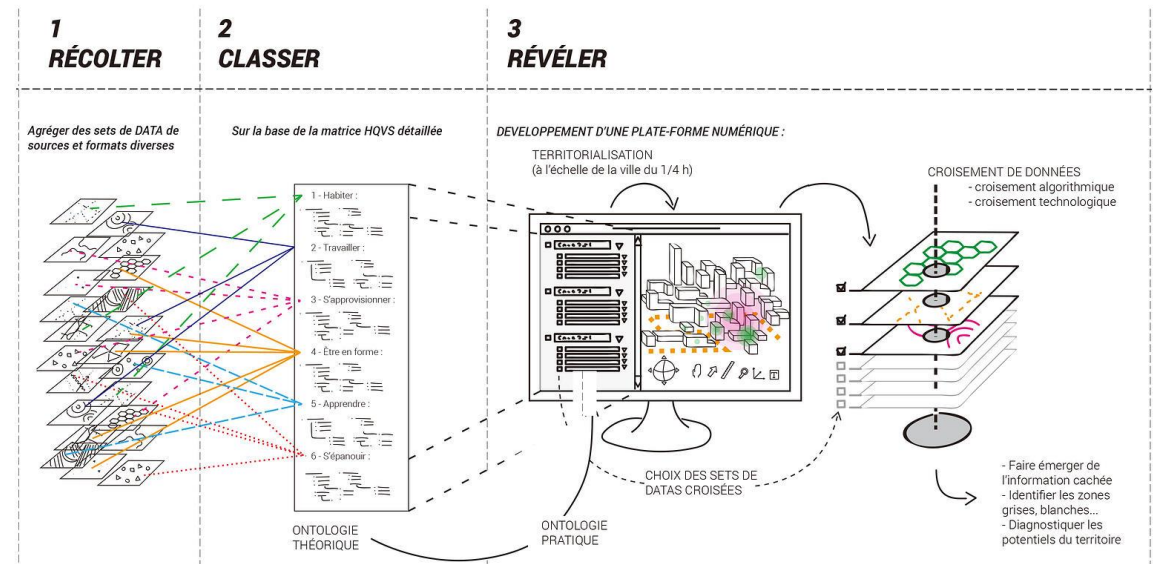


# A concept for the whole Paris ? (2,2 M inhabitants)

A progressive and gradual process

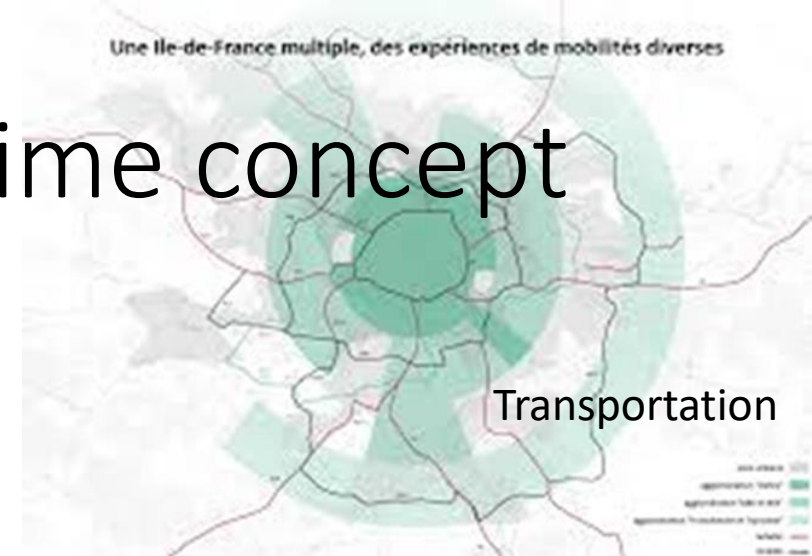
- “Federating political will to implement this big bang of proximity”
- Administrative and financial tools to encourage a policy, based on effective decentralization
- Multi-actor strategy and dynamic for diversity
- And a big data-project

->



# Some unresolved issues...about time concept

- **Time**, time ...*Rome wasn't built in a day !*
- Nor will this concept of the fifteen-minute city be completed in fifteen minutes (ex. 20 years to transform all Schoolyards ?)
- **Inclusion** : And what if it was only a utopia, a fantasy, a smokescreen in the face of the inclusion of the populations of the housing estates around the old town or population autarky ?
- **Scale and rebalancing** : *Is Paris an island in the middle of Greater Paris (10,8 M Inhabitants)?*
- What linkage with the urban fabric of the megalopolis and other neighbouring towns of the Greater Paris area and the interminable transport between home and work ?
- **Money, economy and transportation**,  
=> *Link with the Grand-Paris project ? ...*





# Conclusion : innovation or utopia ?

- An real ecological, climatic and social challenge on the scale of the various districts, too connect with the current major urban mobility and district restructuring projects.
- Does not solve the question of production, food security and employment, except through the part of the short circuit approach.
- Nor does it answer the question of the necessary urban rebalanced and restructuring of cities and their suburbs, linked to age-old urban segregation.
- However, the challenge remains important at the level of neighbourhoods and their greater autonomy, as well as a reduction in unnecessary or polluting mobility.
- Could be a national cause...



# Thank you for your attention



Contact :

[mauricebarth18@gmail.com](mailto:mauricebarth18@gmail.com)

mobile : 00 33 6 28 62 30 05

AITF :

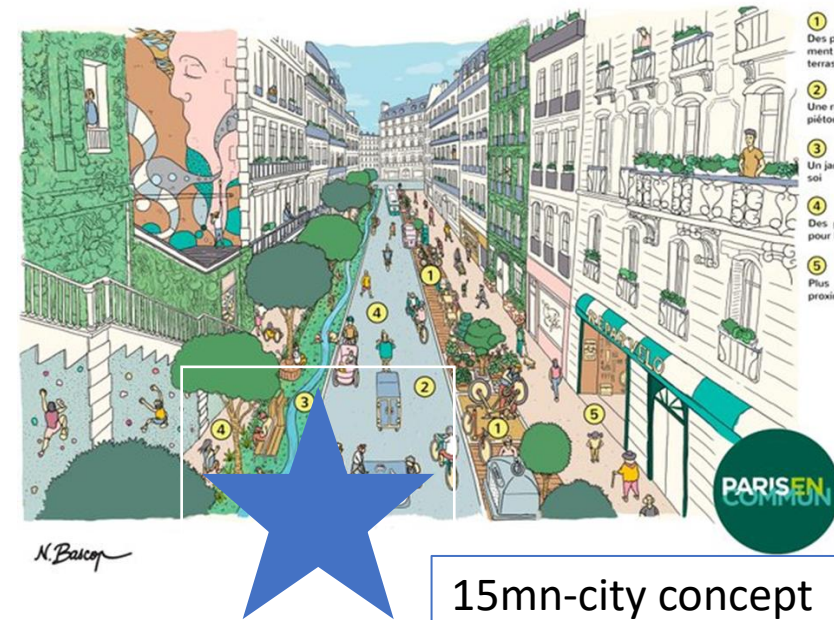
BP 10046 - 38502 COUBLEVIE

Tél : 06 84 43 45 61

secretariat-adherents@aitf.fr

**Maurice BARTH:**

Europe and International Officer, AITF  
French Territorial Engineers Association



15mn-city concept

Paris :  
[https://twitter.com/hashtag/VilleDuQuartDHeure?src=hashtag\\_click](https://twitter.com/hashtag/VilleDuQuartDHeure?src=hashtag_click)

Grand-Paris-Express

