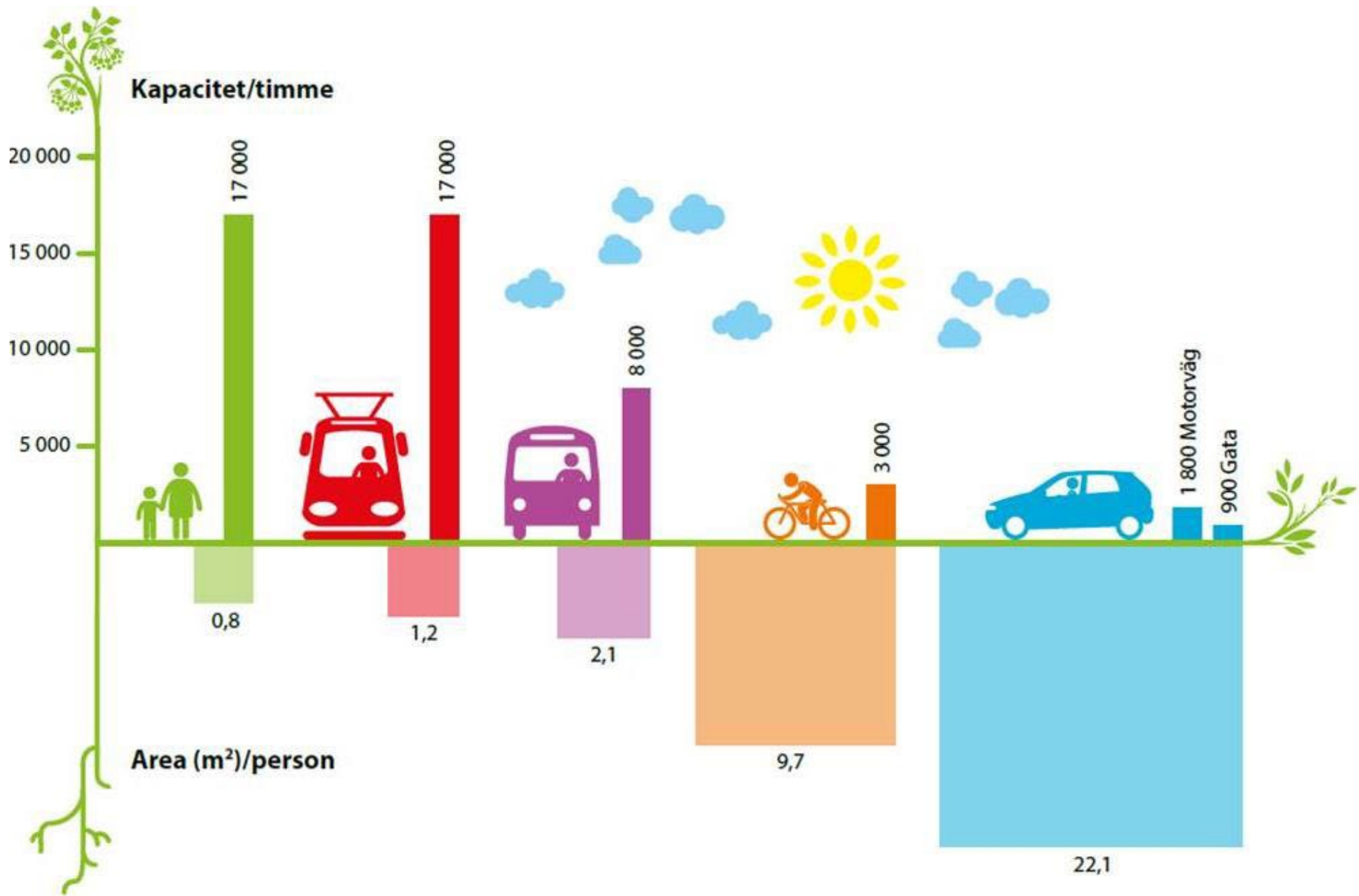




Målinriktad planering i Malmö

Andreas Nordin
Trafikplanerare







- TROTTOAR-SERVERING
- GÄENDE
- CYKELVÄG
- GATUTRÄD
- ANGÖRING
- BIL
- BUSS
- SPÄRVAGN
- CYKEL-PARKERING
- BELYSNING
- SITTA
- PLANTERING / FASAD-GRÖNSKA
- DAG-VATTEN
- INFO
- HANDEL
- MÅLPUNKT/ MÖTESPLATS
- ENTRÉER
- VÄDER-SKYDD/ HÅLLPLAT
- KONST
- CITY-LOGISTIK



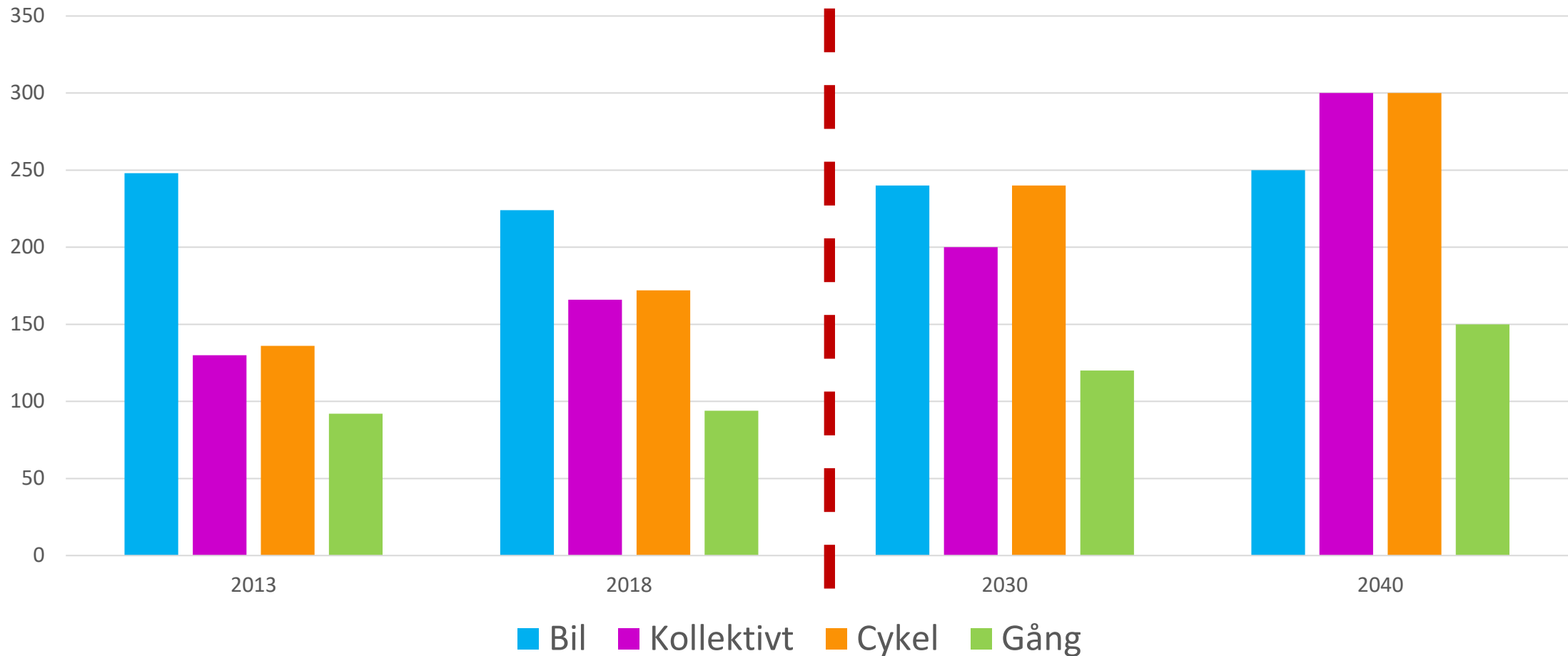
- TROTTOAR-SERVERING
- GÄENDE
- CYKELVÄG
- GATUTRÄD
- ANGÖRING
- BIL
- BUSS
- SPÄRVAGN
- CYKEL-PARKERING
- BELYSNING
- SITTA
- PLANTERING / FASAD-GRÖNSKA
- DAG-VATTEN
- INFO
- HANDEL
- MÅLPUNKT/ MÖTESPLATS
- ENTRÉER
- VÄDER-SKYDD/ HÅLLPLAT
- KONST
- CITY-LOGISTIK

Anpassade mål för varje delområde

Delområde				
1 Centrum	15% (25%)	25% (23%)	35% (25%)	25% (25%)
2 Slottsstaden	25% (33%)	20% (16%)	40% (34%)	15% (14%)
3 Västra hamnen	20% (30%)	30% (25%)	30% (25%)	20% (17%)
4 Norra hamnen	25%	30%	30%	15%
5 Kirseberg	25% (34%)	30% (24%)	30% (24%)	15% (16%)
6 Rosengård/Sorgenfri	20% (31%)	30% (25%)	35% (28%)	15% (15%)
7 Fosie	30% (49%)	35% (24%)	25% (18%)	10% (6%)
8 Holma/Kroksbäck	30% (40%)	20% (17%)	30% (22%)	20% (18%)
9 Limhamn	35% (54%)	20% (14%)	30% (20%)	15% (10%)
10 Bunkeflostrand	45% (62%)	25% (18%)	20% (9%)	10% (8%)
11 Hyllie	30% (56%)	30% (14%)	20% (12%)	20% (18%)
12 Jägersro	50% (59%)	15% (12%)	20% (15%)	15% (15%)
13 Husie	50% (63%)	20% (15%)	20% (14%)	10% (8%)
14 Oxie	50% (64%)	25% (20%)	15% (6%)	10% (8%)
15 Tygelsjö	55% (72%)	20% (12%)	15% (4%)	10% (9%)
Summerat	30% (40%)	25% (21%)	30% (22%)	15% (15%)

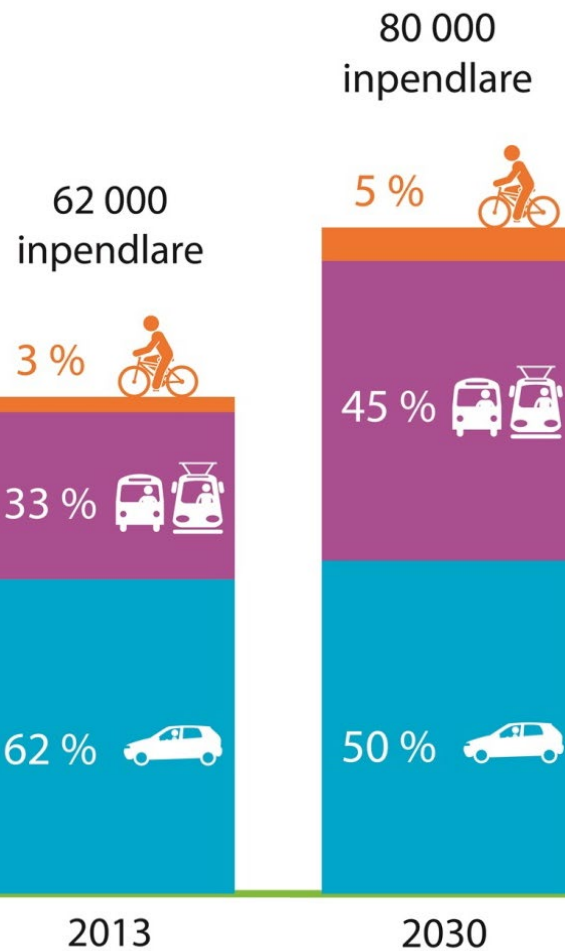
Malmöbornas resor – Målinriktad planering

Resor per trafikslag och dag



Mål för in- och utpendling

Uppdelat i stråk



An architectural rendering of a modern urban plaza. In the center, there is a large, circular fountain with a white, curved canopy supported by several thin, light-colored pillars. The fountain is surrounded by a paved area where many people are walking, sitting on low concrete benches, and playing. To the left and right are tall, modern apartment buildings with many windows. In the background, a tall, white, cylindrical skyscraper with a distinctive lattice structure is visible against a blue sky with light clouds. Green trees are scattered throughout the plaza, and a small dog is visible in the foreground.

Tack!

andreas.nordin@malmo.se